



TOGETHER, WE GROW

The Greater Wichita Partnership is shaping the future of South Central Kansas through deliberate strategies for intended outcomes. Our investors are critical to achieving economic growth. While significant progress has been made, we believe this is just the beginning. Our ability to grow depends on an evolutionary-based mindset with the foresight to tackle the challenges and opportunities of tomorrow, in addition to today.

Promoting Progress

Today's economic development is interrelated. In order to keep and grow jobs, you need people and in order to have people, you have to have a great quality of place. Since the Greater Wichita Partnership's formation in 2015, we've successfully moved our region forward. Below are a few key highlights:

- Addressed and fast-forwarded economic development projects.
- **Attracted and secured jobs** that could have gone to other states.
- Cultivated a spirit of collaboration and teamwork within the region.
- Initiated an aggressive approach to **talent marketing**.
- Accelerated development in **Downtown Wichita**.
- Launched two major **community planning and visioning efforts**.

"We must proactively drive change, push conversations about what our region needs, and think and act differently, to create the future we want for the next generation."

Charlie Chandler and Aaron Bastian, Co-chairs of the Greater Wichita Partnership

The Greater Wichita Partnership is focused on how to strategically create the most impact. We believe framing the focus of our work on three main priorities is the most effective way to fast-forward the region's growth — **jobs, talent, and quality of place**.



Greater Wichita Partnership PRINTED WEBSITE REPORT

Growing Jobs

13,800

JOBS ANNOUNCED
2015-YTD

\$3.4B

CAPITAL INVESTMENT
2015-YTD

\$673M

TOTAL ANNUAL PAYROLL
2015-YTD



Learn More Attracting Talent

45K+

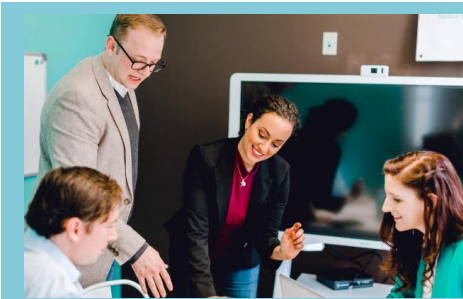
CHOOSE WICHITA WEBSITE
SESSIONS
SINCE LAUNCH

19

RESOURCES FOR
EMPLOYERS TO SELL THE
REGION

500+

HR AND TALENT
PROFESSIONALS ENGAGED
THROUGH
PRESENTATIONS
SINCE LAUNCH





Greater Wichita Partnership PRINTED WEBSITE REPORT

[Learn More](#)

Enhancing Quality of Place In Downtown Wichita

1,658

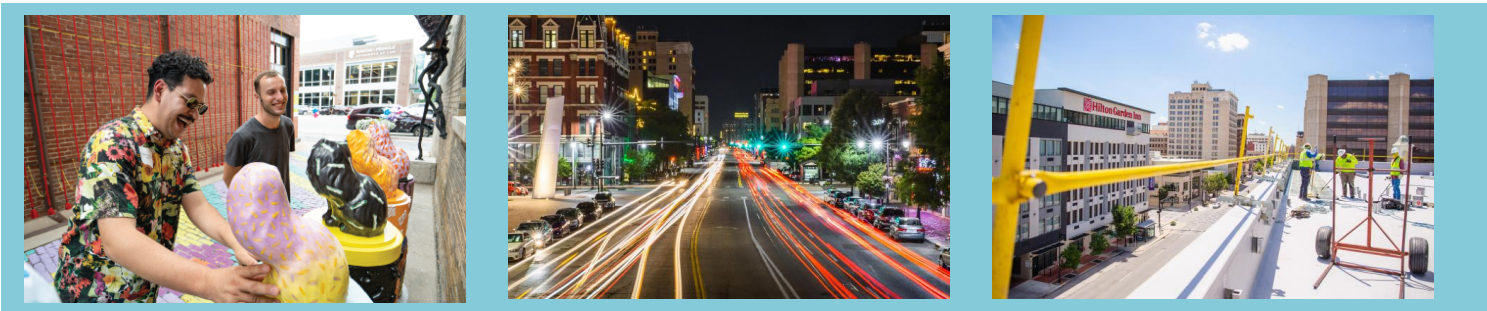
NEW RESIDENTIAL UNITS
IN DOWNTOWN WICHITA
2010-YTD

\$1.6B

INVESTMENT IN PROJECT
DOWNTOWN AREA
2010-YTD

375

HOTEL ROOMS ADDED
2010-YTD



[Learn More](#)

Enhancing Quality of Place in our Distinctive Region

3

MAJOR COMMUNITY
PLANS UNDERWAY:
DOWNTOWN WICHITA
ACTION PLAN, PROJECT
WICHITA, RIVERFRONT
LEGACY MASTER PLAN

19K+

COMMUNITY
ENGAGEMENT
TOUCHPOINTS

\$1.3M

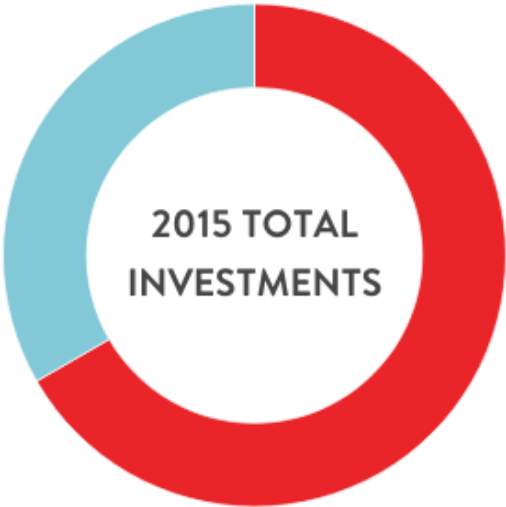
RAISED TO COMPLETE
PLANNING EFFORTS



[Learn More](#)

Your investment has a direct and positive impact toward cultivating a rich and innovative environment to grow our local economy.

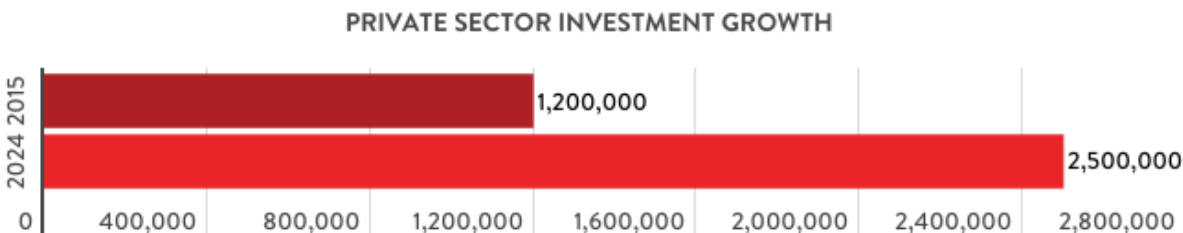
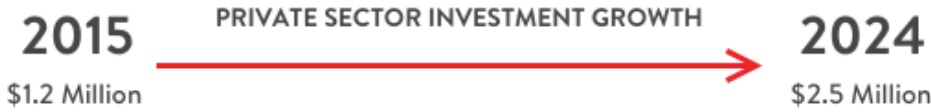
Charlie Chandler and Aaron Bastian, Co-chairs of the Greater Wichita Partnership



- 2015 Private Investment Total: \$1.2 Million
- 2015 Public Investment Total: \$600,000
 - \$300,000 from City of Wichita
 - \$300,000 from Sedgwick County



- 2024 Private Investment Total: \$2,500,000
- 2024 Public Investment Total: \$800,000
 - \$400,000 from City of Wichita
 - \$400,000 from Sedgwick County



The Greater Wichita Partnership is successfully leveraging investments and growing our investor base to continue advancing



the economic development of our region. We invite you to become an investor and fast-forward our region's present vitality and future growth. Learn more about the Greater Wichita Partnership and the difference your investment can make.



Vice President of Investor Relations
BECCA NEWMAN

(316) 500.6650
becca@greaterwichitapartnership.org

[Contact Us](#)